

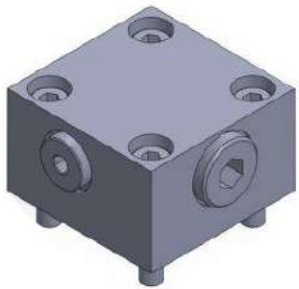
Logic Cartridges

Cartridge Valves - CV 16 to CV 40



These valves are suitable for mounting in manifold cavities machined as per ISO 7368. By selecting suitable cartridge and cover, it is possible to achieve functions like Check valve, Directional control valve, Unloading valve, Throttle valve etc. These valves offer fast response, have very low internal leakage and can handle very large flow rates. The cartridges are available with two area ratios.

Two Port Slip-In Cartridges ISO 7368 - CV 50 to 100



The control covers will have to be ordered separately. Cartridge valves are available in two area ratios and four cracking pressures. Depending upon the function required, cartridge valve having suitable area ratio must be used. Slip in cartridge valves are two port valves that can be inserted into compact manifold control blocks, having cavities that are machined as per ISO 7368. The function of the cartridge valve depends on the type of control cover used. With the help of suitable control cover the cartridge valve can assume pressure, directional, throttling or combination of these function.

CVC-PCTS

Model CV in cavities machined as per ISO 7368, and provide facility to use the cartridge valve as a leakage free pilot operated check valve, when its pilot port Z1 is connected to port B of the cartridge. In this condition, the combination allow free flow from its port A to port B and free reverse flow from port B to port A when its pilot port X is pressurised.



In addition, flow passing through the cartridge, as an optional feature, can be controlled by controlling the opening of the poppet by means of a Stroke limiter screw provided on the cover. The throttling is effective in either direction. These Stroke limiters are more effective with cartridges having poppet with cushion nose.